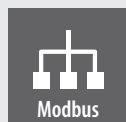
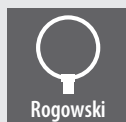
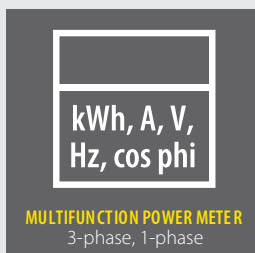
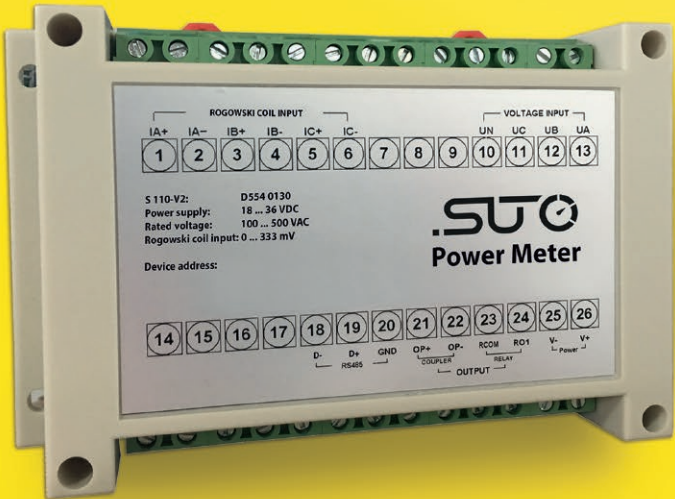


# POWER METER

## S 110



# Power Meter S 110 — monitors the power consumption and power quality



S 110 hat rail mountable

## S 110 FEATURES



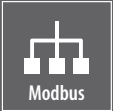
**MULTIFUNCTION  
POWER METER**

3-phase, 1-phase



**ROGOWSKI  
COILS**

Wide range,  
highly accurate



**MODBUS/  
RTU INTERFACE**

Connects to any  
Modbus-Master

## S 110 OPERATION PRINCIPLE

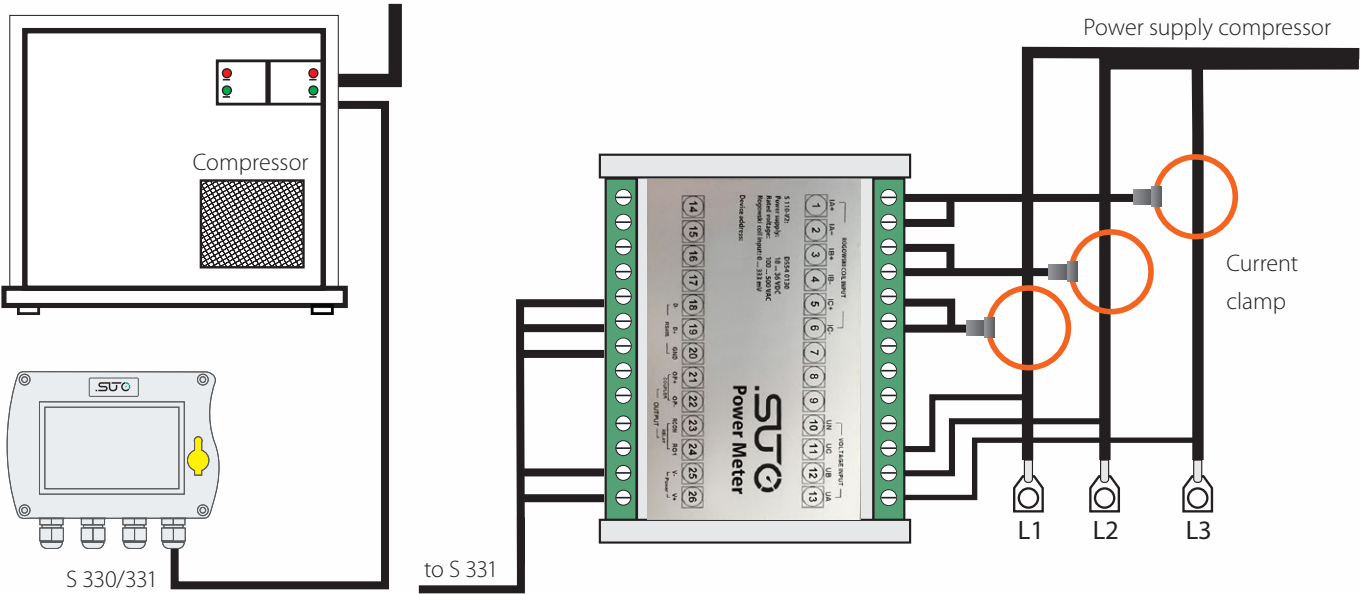
The S 110 Power Meters are designed for easy installation and high accuracy. They measure the actual power consumption in kW and accumulate the Energy consumption in kWh of a 3-phase load.

The S 110 can measure other parameters such as current, voltage, cos phi etc. Hat rail, wall mountable and portable versions are available.

## S 110 TECHNICAL DATA

General Specifications		
Nominal voltage (L-N, L-L)	100 ... 500 VAC	
Voltage measurement	3PH4W, 3PH3W, 1PH2W	
Clamp sensor input range	(333 mV only) external Rogowski coil	
Available clamp sensors	Rogowski coil	1 ... 100 A 10 ... 1000 A 30 ... 3000 A
Power range	up to 2000 kW (depends on Rogowski coil)	
Accuracy	Voltage	0.2%
	Current	0.5%
	Clamp	Class 1
	Energy	Class 0.5
Output	Modbus/RTU	
Supply	24 V DC / 3.5 W	
Operating Temperature	-25°C ... +55°C	
Dimensions	Hat rail version	122 x 87 x 23 mm
	Portable	177 x 177 x 60 mm

# S 110 INSTALLATION



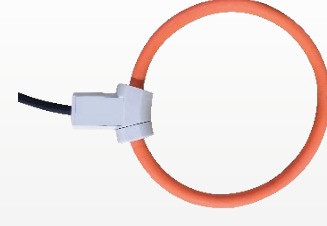
In above illustration a power meter is installed directly into the connection box of the compressor. The Rogowski coils can be easily fixed. The voltage connection can be drawn from other available connection points. A separate cable connects the S 110 power meter to the S 330/331 with Modbus/RTU and 24 VDC power supply. The power meter could also be installed into the connection cabinet where the power supply for the compressor is coming from. If no hat rail mounting is available, there is a wall mountable version of the S 110 power meter.



S 330/331 can be used as stationary display of up to 16 power meters



S 110-P, for connection to S 551



Rogowski coils with wide measuring range, high accuracy and easy installation

# S 110 ORDERING

Please use the following table to assist in placing your order with our sales staff.



Visit our website or e-mail us:  
[www.suto-itec.com](http://www.suto-itec.com)  
[sales@suto-itec.com](mailto:sales@suto-itec.com)

S 110 Power Meter	
Order No.	Description
Stationary	
D554 0130	S 110 power meter, hat rail, Modbus/RTU, 24 VDC supply
S554 0140	Rogowski coil for S 110, 1000 A, 100 mm diameter, 1.8 m cable, open ends
S554 0141	Rogowski coil for S 110, 3000 A, 150 mm diameter, 1.8 m cable, open ends
S554 0142	Rogowski coil for S 110, 100 A, 16 mm diameter, 1.8 m cable, open ends
Portable	
P554 0134	Portable power meter S 110-P, Modbus/RTU, including 4 test leads, 4 test clips, connection cable to S 551
S554 0160	Rogowski coil for S 110-P, 1000 A, 100 mm diameter, 1.8 m cable, connector to S 110-P
S554 0161	Rogowski coil for S 110-P, 3000 A, 150 mm diameter, 1.8 m cable, connector to S 110-P
S554 0162	Rogowski coil for S 110-P, 100 A, 16 mm diameter, 1.8 m cable, connector to S 110-P
Options	
A554 0035	Transport case S 551 for sensors and cables



EUROPEAN OFFICE	CHINA OFFICE	ASIA / PACIFIC OFFICE
<p>SUTO iTEC GmbH</p> <p>Werkstr. 2 79426 Buggingen Germany Fon: +49(0) 7631 936 889 0 Fax: +49 (0) 7631 936 889 19 Mail: sales@suto-itec.com</p>	<p>SUTO iTEC (China) Co. Ltd</p> <p>D3 Building, Unit A, 11/F, TCL International E City 1001 Zhongshanyuan Road, Nanshan Shenzhen, China Tel: +86 (0) 755 8619 3164 Fax: +86 (0) 755 8619 3165 Email: sales@suto-itec.cn</p>	<p>SUTO iTEC (ASIA) Co. Limited</p> <p>Room 10, 6/F, Block B, Cambridge Plaza 188 San Wan Road, Sheung Shui, N.T. Hong Kong Tel: +852 2328 9782 Fax: +852 2671 3863 Email: sales@suto-itec.asia</p>